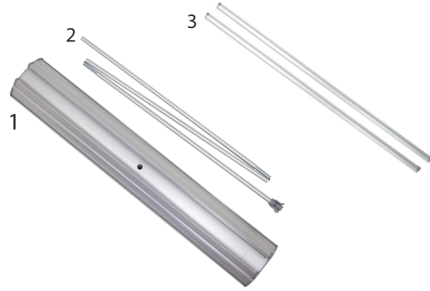


Dual Retractor

Product Parts

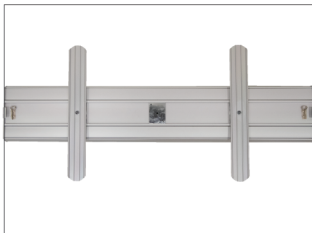
1. Base
2. Shock Corded Pole
3. Banner Rail (x2)



Display Set-Up

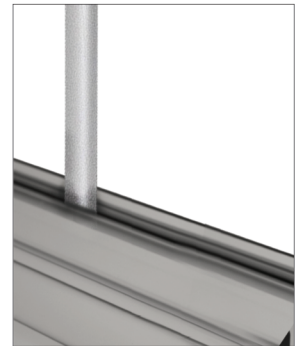
Step 1

Flip the Base (1) upside down and rotate the feet to sit perpendicular to the Base.



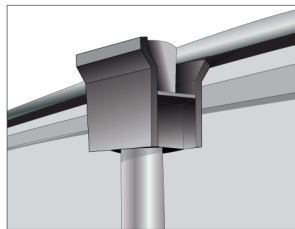
Step 2

Assemble the shock corded pole (2). Insert the bottom of the pole into the hole in the center of the Base (1). Ensure the pole is seated completely into the bottom of the base.



Step 3

Stand facing the back of the Base (1) and gently lift the Snap Banner Rail (3) up. Gently tilt the Base back if needed to attach the Pole's (2) top connector into the rear groove on the Snap Banner Rail where the "insert" sticker is located. Repeat for the opposite side.



Storage & Care

Place all product parts into Carry Case and store in a cool dry location.
To clean, wipe with damp cloth.