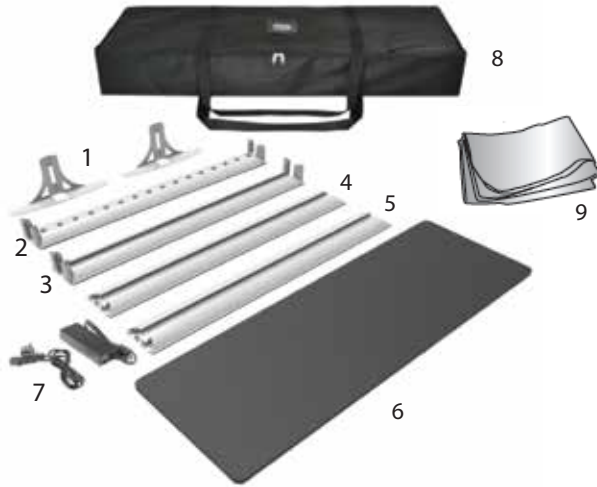


# Astra Counter

## Product Parts

1. Foot(x2)
2. Bottom
3. Top
4. Left
5. Right
6. Tabletop
7. Power Supply
8. Soft Case
9. Graphic (x2)

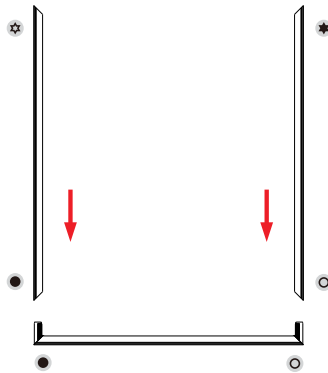
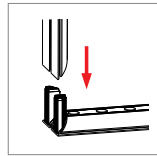
*Symbols on hardware match corresponding pieces*



## Display Set-up

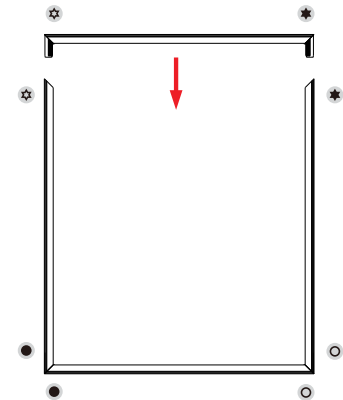
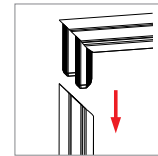
### Step 1

Place the Bottom (2) on the floor and insert Right (5) and Left (4) sections.



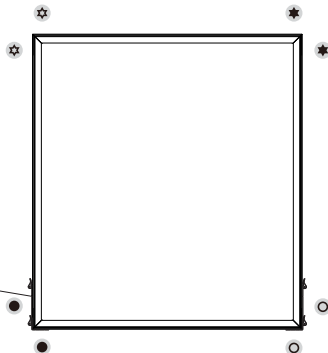
### Step 2

Insert Top (3) onto Left (4) and Right (5) sections.



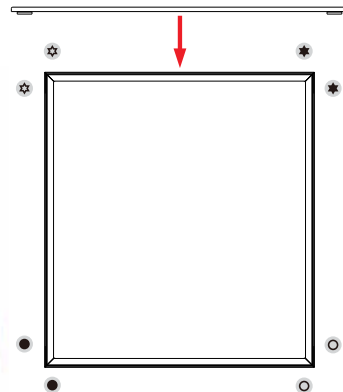
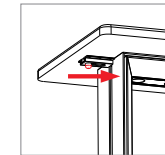
### Step 3

Insert feet (1) tabs along the groove in the frame and turn to secure.



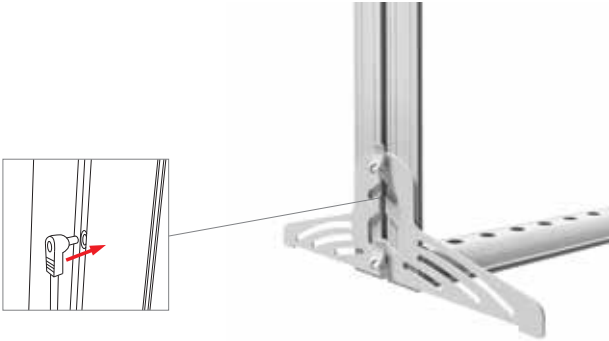
### Step 4

Place Tabletop (6) along the top of the frame. Push connector into groove to secure.



### Step 5

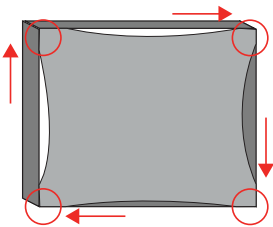
Plug the Power Supply (7) into the display.



## Graphic Installation Process

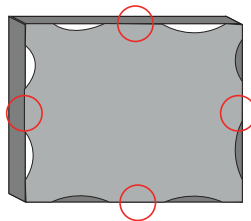
### Step 1

Start with the corners. Working in a clockwise motion insert each corner of the graphic into the frame.



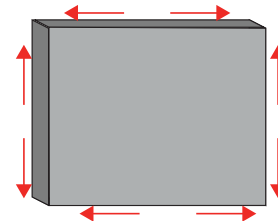
### Step 2

Move to the centers. Insert the centers of the graphic on each side of the frame.



### Step 3

Complete installation. Insert the remaining portions of the graphic into the frame starting from the center points and working your way to the corners.



## Storage and Care

Place all Frame parts into Carry Case and store in a cool dry location. To clean non-graphic hardware, wipe with a damp cloth.

Do NOT dry clean graphic, can Steam Clean wrinkles