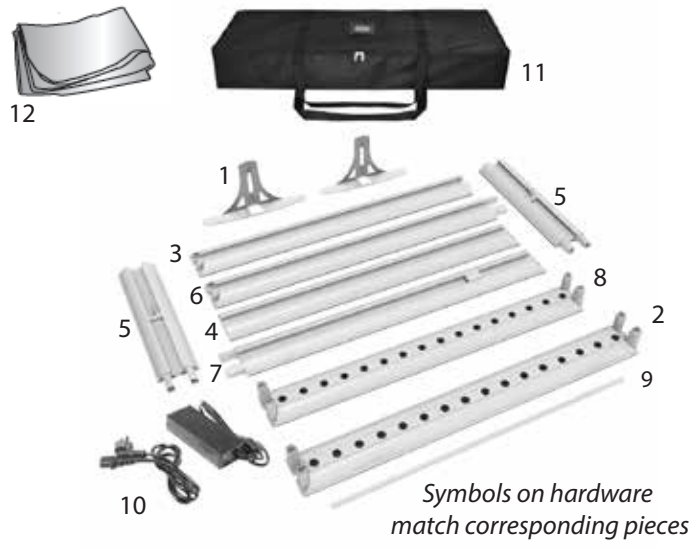


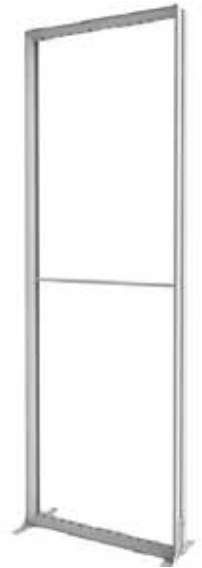
3' Astra Display

Product Parts

1. Foot (x2)
2. Bottom
3. Bottom Left
4. Bottom Right
5. 8' Extension (x2)
6. Top Left
7. Top Right
8. Top
9. Center support bar
10. Power Supply
11. Soft Case
12. Graphic (x2)



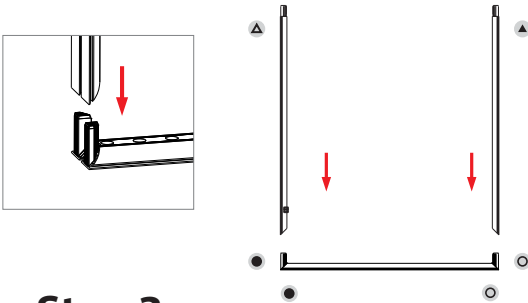
Be Advised Pieces easily removable before graphic installation. If moving display after set-up hold from bottom section



Display Set-up

Step 1

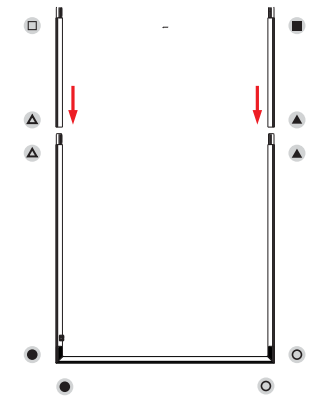
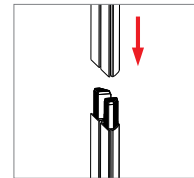
Place Bottom (2) on Floor. Match Bottom Left (3) & Right (4) connectors to bottom (2) corresponding with the matching shapes.



Step 2

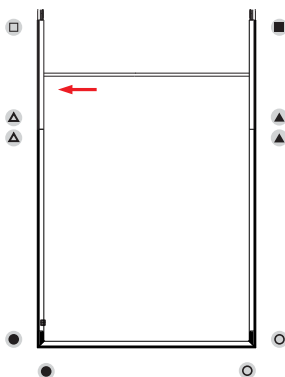
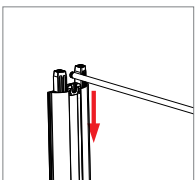
If using an 8' display attach the extension pieces (5) to the bottom vertical sections.

Skip this step for 6.5' height.



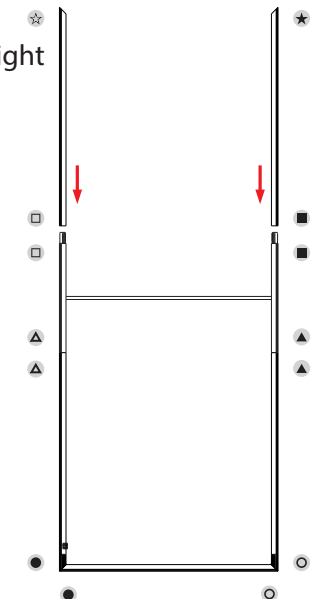
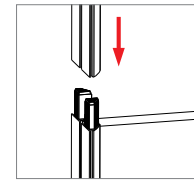
Step 3

Attach the center support bar (9).



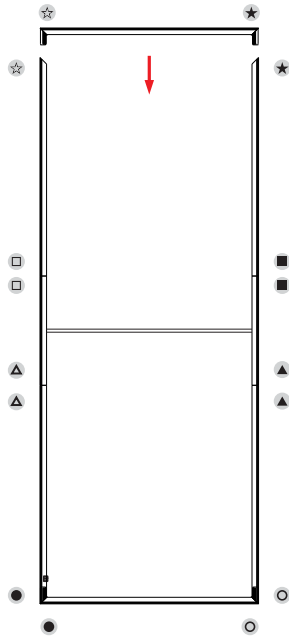
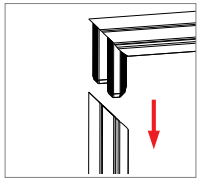
Step 4

Gently lay down the display and attach the Top Left (6) and Top Right sections (7).



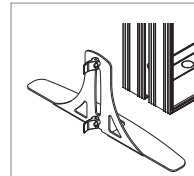
Step 5

Attach the horizontal top section (8).



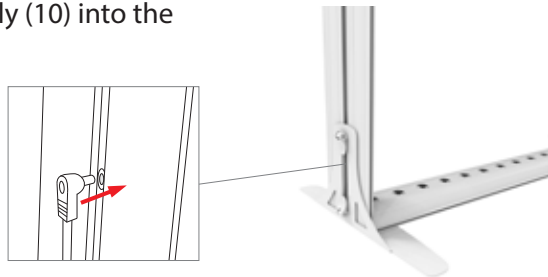
Step 6

Stand the display up. Carefully slide the feet (1) into the groove on the display. Turn & press to lock.



Step 7

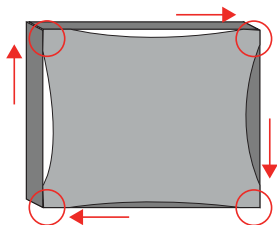
Plug the Power Supply (10) into the display.



Graphic Installation Process

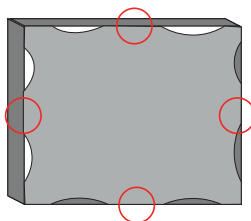
Step 1

Start with the corners. Working in a clockwise motion insert each corner of the graphic into the frame.



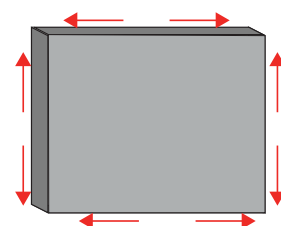
Step 2

Move to the centers. Insert the centers of the graphic on each side of the frame.



Step 3

Complete installation. Insert the remaining portions of the graphic into the frame starting from the center points and working your way to the corners.



Storage & Care

Place all Frame parts into Carry Case and store in a cool dry location. To clean non-graphic hardware, wipe with a damp cloth. Do NOT dry clean graphic, can Steam Clean wrinkles.